

EnterpriseOne Pages

1. EnterpriseOne Pages

JD Edwards has transformed the EnterpriseOne User Experience with innovative features that give the end users the ability to personalize their own user experience to meet their individual preferences without customizations. This review examines the history and direction of one such feature - EnterpriseOne Pages.

Enjoy the history lesson and see how and why Syntax can transform your user experience.

1.1 EnterpriseOne Pages - Tools 9.1

EnterpriseOne Pages (E1 Pages) started as an effort to utilize the empty white space that was created by moving EnterpriseOne Menus to the top of the screen but have now evolved into so much more. E1 Pages first became available with Tools Release 9.1 which was released in December 2011.



Did you know? E1 Pages were once referred to as "Landing Pages" as well as "Welcome Pages"

The early E1 Pages allowed for a graphical display of navigation or informational pages from the home page and also provided the ability to Launch Applications and Reports through custom authored content via JavaScript. These Business Process Flows simplify navigation to applications and reports and are especially well suited for Mobile and Tablet Computing.



E1 Pages allow for:

- All content is assigned to individual users, roles or everyone
- Assigned Pages are represented in a tab bar
- Tab bar order can be changed and persisted by the end user

In addition to the graphical display of navigation or informational pages, you have the ability to define external URL's for display on the home page area.



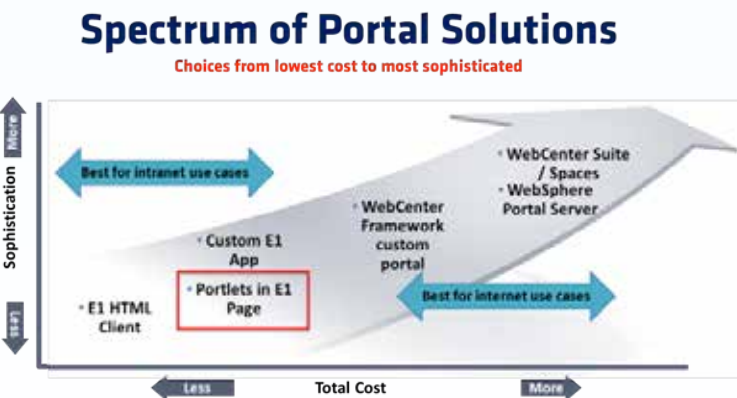
1.2 Portlets in E1 Pages - Tools 9.1.2

A Portal is an application that aggregates portlets into pages and provides authentication, authorization, and administration tools (ie Oracle Web Center). A Portlet is a single piece of portal content that becomes the window through which users can interact with an application while using the portal (ie Customer Self Service Portlet).

Beginning with Tools 8.98 EnterpriseOne began supporting “Web Services for Remote Portals” (WSRP) which removed the requirement for special portlet code to be installed in the portal and avoided re-implementation of the presentation layer on each portal.

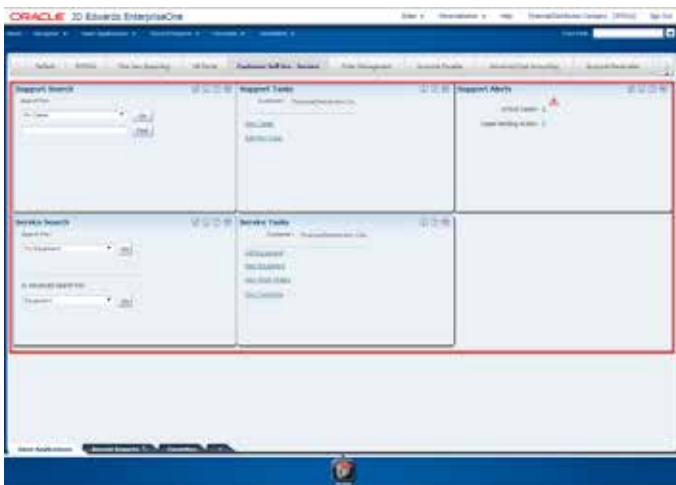
The EnterpriseOne HTML Web Server could then act as the WSRP producer to provide content for the WebSphere Portal, WebCenter Portal or Oracle Portal Server which can all become the WSRP Consumer.

With the release of Tools 9.1.2 EnterpriseOne created a low cost Portal option for EnterpriseOne by allowing the E1Pages themselves to act as the WSRP Consumer with the HTML Web Server acting as the WSRP producer.



Customers can leverage this low cost option to provide external self-service for Human Resources, Buyers, Suppliers and other purposes without investing, building and maintaining large scale Portal infrastructure. This is especially useful for those customers deploying only a limited set of self service options.

An example of a Portlet in an E1Page is shown below:



EnterpriseOne provides for a large list of available portlets that can easily be aggregated into an E1Page:

- CSS Administrator Tasks
- Shipment Status Tracking
- Receivables Status
- Shipment Delivery Information
- Customer Order Status
- CSS Search
- CSS Tasks
- Customer Alerts
- Account Balance
- Account Payment Status
- Account Aging
- CSS Portlet Support Tasks - View Case
- CSS Portlet Support Tasks - Add New Case
- CSS Portlet Support Alerts - Critical Cases
- CSS Portlet Support Alerts - Cases Pending Action
- CSS Portlet Support Alerts - Solution Advisor
- CSS Portlet Support Search
- CSS Portlet Service Tasks - Add Equipment
- CSS Portlet Service Tasks - View Equipment
- CSS Portlet Service Tasks - View Work Orders
- CSS Portlet Service Tasks - View Contracts
- CSS Portlet Service Search
- RSS - Open Approvals, High Priority, Special Request, Over 10 days
- Sourcing - Buyer & Bidder/Supplier
- Sourcing - SRM Portal
- SSS - Quote Alerts
- SSS - Search
- Supplier Performance - Quality
- Supplier Performance - Delivery
- Supplier Performance - Cost
- SSS - Quote Response Entry
- SSS - Purchase Order Inquiry
- SSS - Purchase Order Edits (Manage PO)
- SSS - Purchase Order Receipts (Shipment Notification)
- SSS - Inventory Information Inquiry
- SSS - Supplier Schedule Revisions
- SSS - Supplier Payment Inquiry
- SSS - Update Address Book Record
- SSS - Supplier Analysis Summary (Quality, Delivery & Cost)
- SRM Portlet - PO Acknowledgment
- SRM Portlet - PO Inquiry
- SRM Portlet - Receipt Inquiry
- SRM Portlet - Movement in Routing
- HR - Employee Career
- HR - Manager Career
- HR - Delegates
- HR - Enhanced Employee Self Service
- HR - New Employee
- HR - Employee Performance
- HR - My Workforce
- HR - eRecruit
- HR - Global Leave Administration
- HR - Global Leave Approvals
- HR - Payroll
- HR - My Profile
- HR - My Profile
- HR - Paid Time Off
- HR - Paid Time Off
- HR - Time Entry
- HR - Payment Review
- Plant Manager's Dashboard

1.3 OneView Reports in E1 Pages - Tools 9.1.3

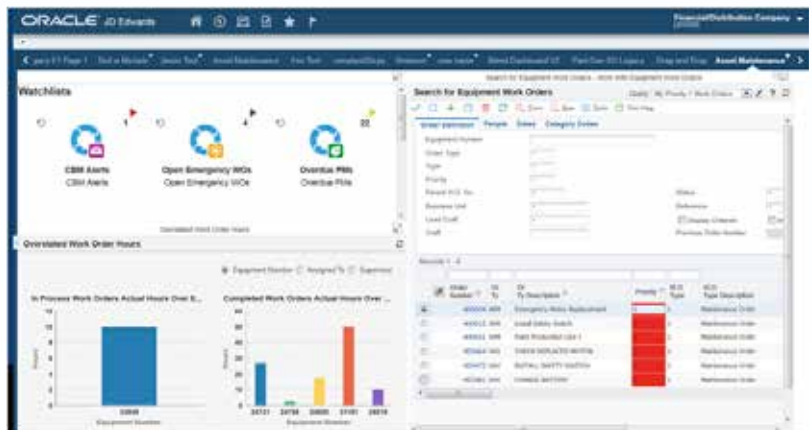
Within any organization there are a number of individuals who do not want to have to define or execute a query and merely want to see the results. EnterpriseOne Tools 9.1.3 added the ability to embed One View Reports in E1 Pages. Provided that the One View Report was defined as a task with a predefined saved query, the One View report is executed real time when the E1 Page is selected.



1.4 Watchlists in E1 Pages - Tools 9.1.4

Watchlists allow the ability for end users to “manage by exception” OneView Watchlists can be displayed in E1 Pages as a button, tile or list starting with Tools 9.1.4.

When the various features of E1 Pages are combined the EnterpriseOne User Interface is transformed:



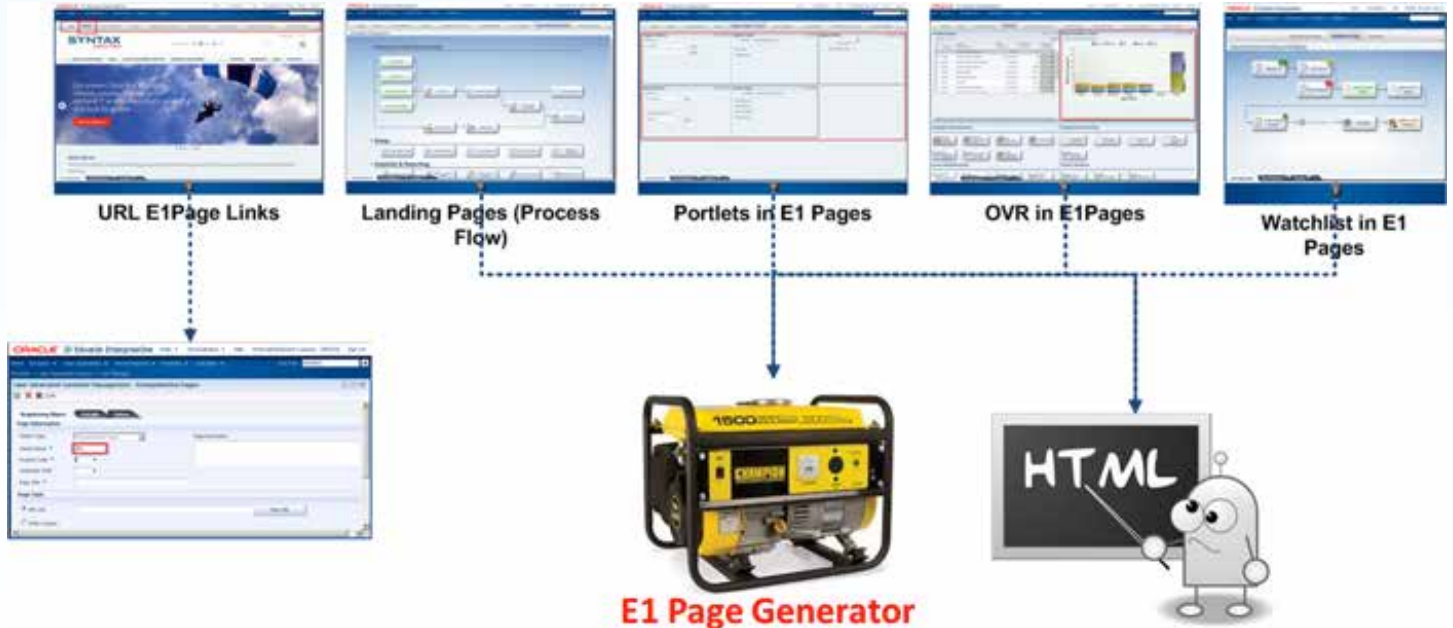
1.5 E1 Page Generator

At a technical level E1 Pages can comprise HTML, CSS and JavaScript. While these technologies can be used by skilled developers to create E1 Pages the Business Analysts and End User may have limited skills with these technologies.

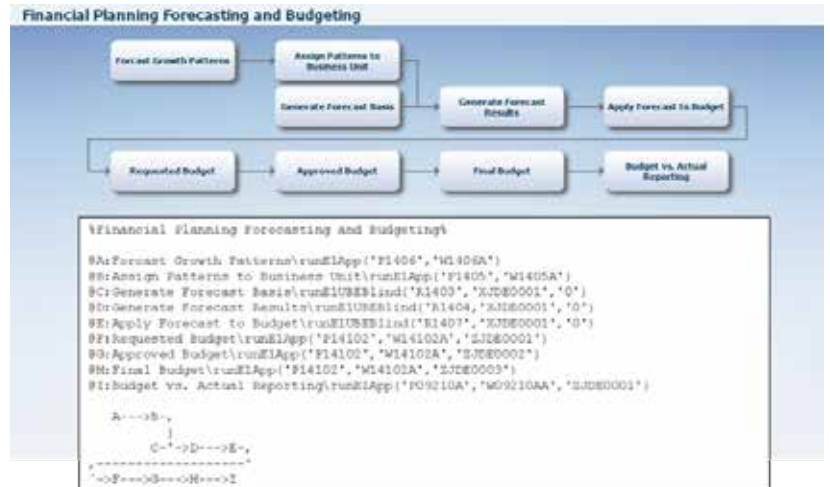
To simplify the E1 Page creation process JD Edwards has delivered and continually enhanced the “E1 Page Generator” tool which provides the following benefits:

- Abstract the creation of Business Flows to a Business Flow Framework.
- Standardizes HTML Flows
- Common UI Template reinforces aesthetic integrity
- Removes the learning curve involved in encoding the business knowledge into HTML and CSS

For Tools 9.1.X E1 Page creation can be summarized as follows.



While the E1 Page Generator makes the process of creating customer specific pages more efficient by using a simple to learn text layout language this process still requires users to design outside of EnterpriseOne. Users must then import their E1 Pages into EnterpriseOne. Overall these “Generated E1 Pages” still requires ample skill, practice and experience to create effective visualizations. A simplified E1 Pages and the “script” language used to create it is shown below:



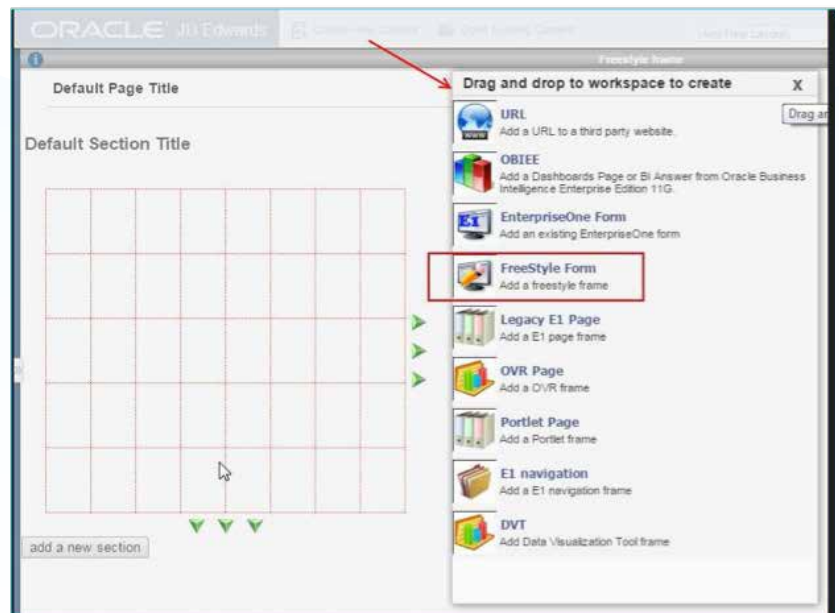
1.6 E1 Page Composer

Beginning with Tools 9.2.0.2 users have the option of the “Generated E1 Pages” or a new paradigm of “Composed E1 Pages”

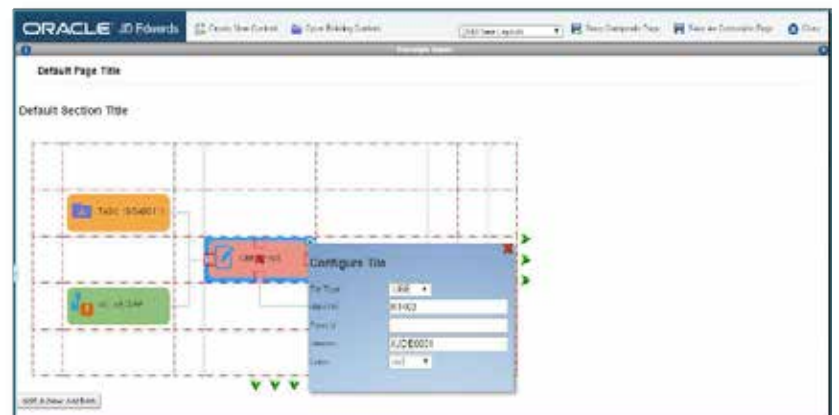
The E1 Page Composer provides a new type of E1 page that enables users to dynamically define personalized layouts over the applications, reports and watchlists. The features provided by this new tool are equivalent in functionality to the E1 Page Generator and provide for a number of key advantages over “Generated E1 Pages”:

- Minimal learning curve
- Reduced build time from hours to minutes
- No coding experience required
- Eliminates the need for HTML developers
- Provides robust capabilities for end user
- Leverages existing UDO (User Defined Object) functionality

The E1 Page Composer is a component of the user interface and is not external the EnterpriseOne. End users can select from a number of elements to add to a Composed Page:

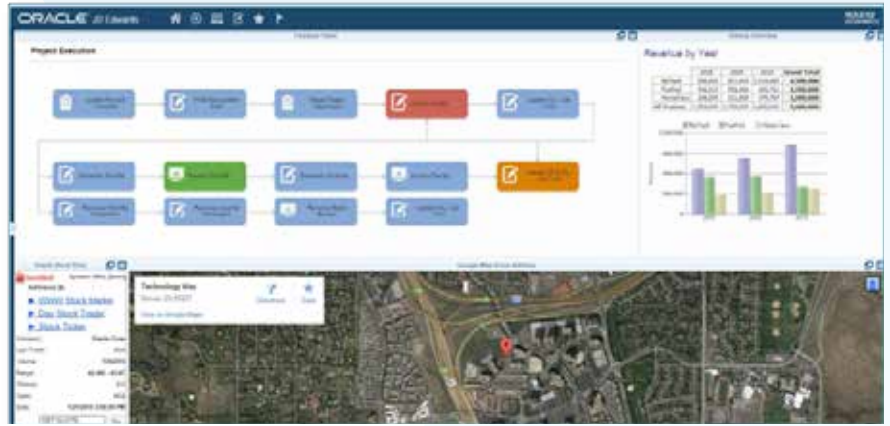


The E1 Page Composer design is intelligent and intuitive allowing any experienced EnterpriseOne user to personalize their workspace.



1.7 Composed in E1 Pages - Tools 9.2.0.2

The finished Composed Pages can be created in minutes to transform the user interface and user experience.

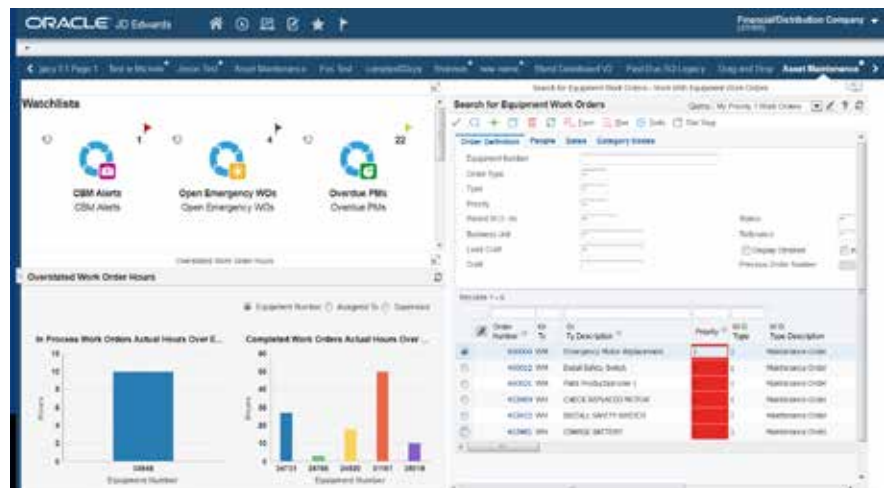
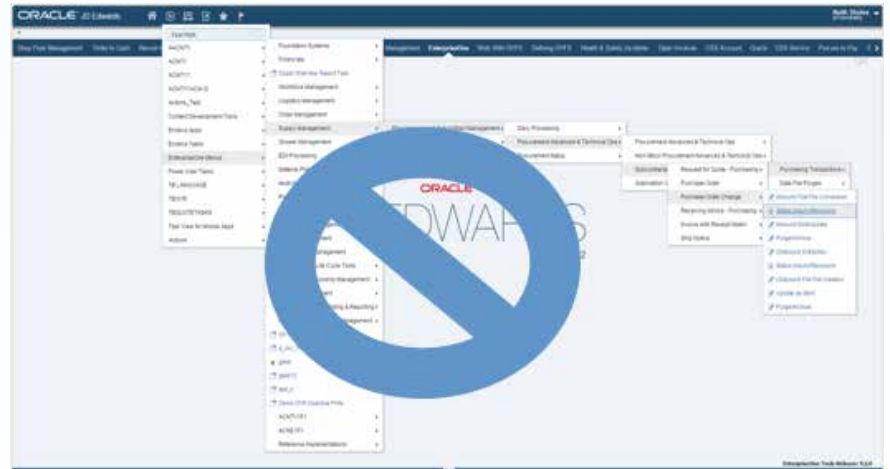


1.8 Moving Forward

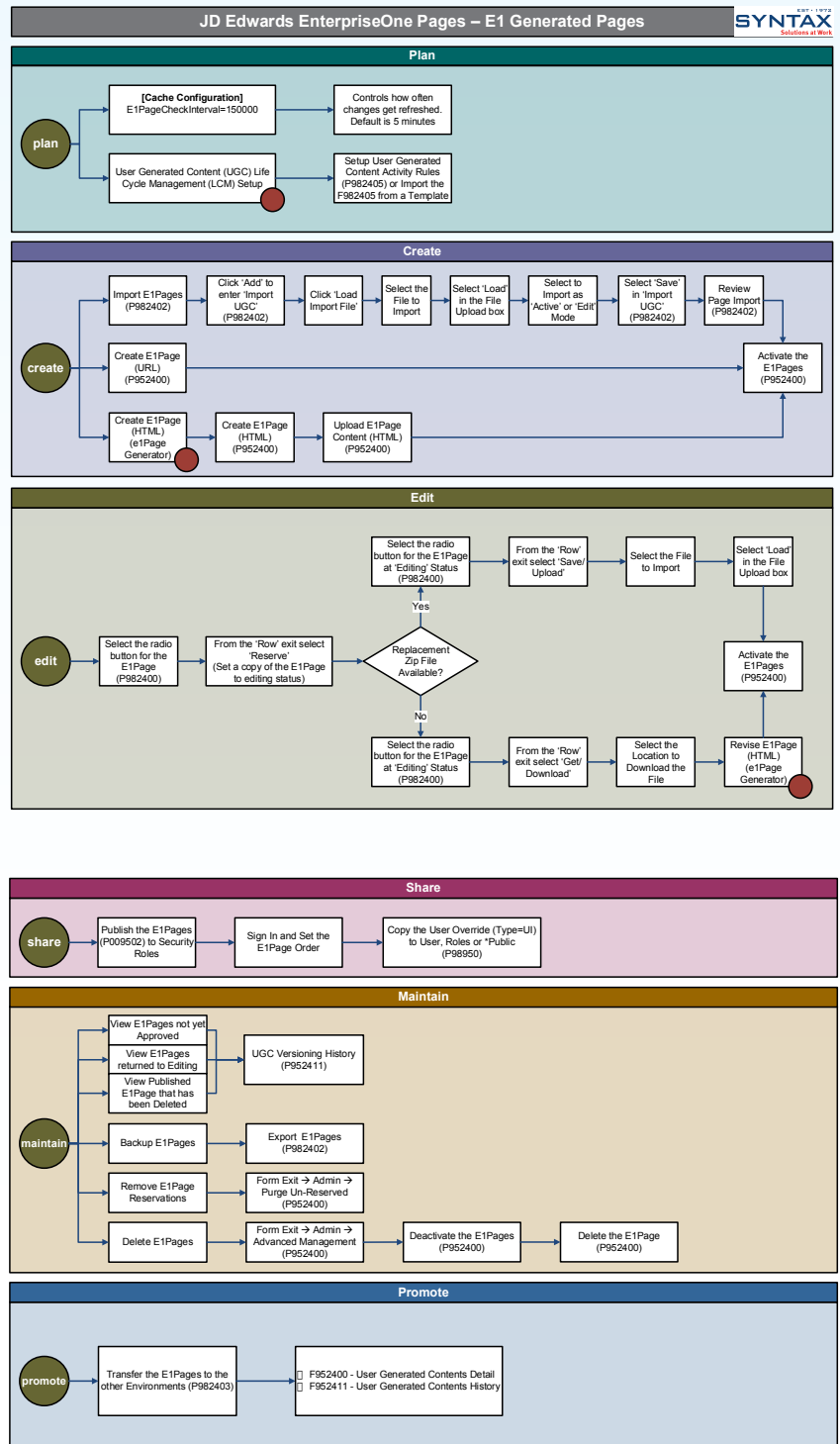
As our workforce continues to transform and transition end users expect a 'modern' solution that allows them to take ownership of personalization to meet their individual needs.

Customers should embrace the consumerization of IT and deploy E1 Pages as the default user interface instead of the traditional Solution Explorer Menus

Syntax's team of expert Functional consultants can provide training, industry specific advice and guidance on E1 Page creation while our Technical Consultants (CNC) can configure, train and manage the technical setup and change management associated with these technologies.



2 BONUS: EnterpriseOne Generated E1 Page Guide



Colin Dawes

Chief Technology Officer | 1-800-709-6027 | cdawes@syntax.com

Boston
275 Grove St.
Suite 2-400
Newton, MA
USA 02466

Montreal
8250 Decarie Blvd.
Suite 400
Montreal, QC
Canada H4P 2P5

New York
4445 Park Ave.
New York, NY
USA 10011

Toronto
95 Mural St., Suite 105
P.O. Box 16
Richmond Hill, ON
Canada L4B 3G2